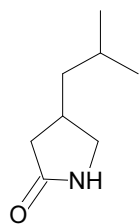
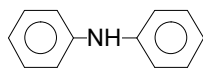


- 1 su Pregabalin cyclic artefact
- 2 su Diphenylamine
- 3 su THJ-018
- 4 su THJ-2201
- 5 su N,N-Diethyl-2-(1-pentyl-1H-indol-3-yl)-4-thiazolemethanamine
- 6 su N-(2-Methoxyethyl),N-iso-propyl-2-(1-pentyl-1H-indol-3-yl)-4-thiazolemethanamine
- 7 su FUB-PB-22 marker TMS

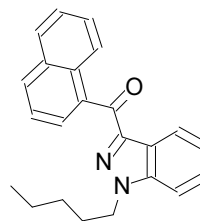
1 (su) Pregabali...



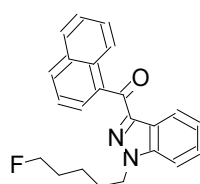
2 (su) Diphenyla...



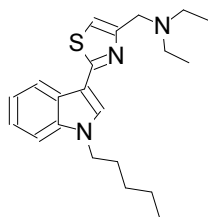
3 (su) THJ-018



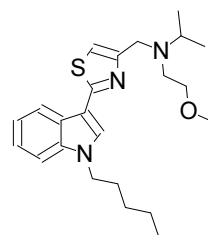
4 (su) THJ-2201



5 (su) N,N-Dieth...



6 (su) N-(2-Meth...



7 (su) FUB-PB-2...

