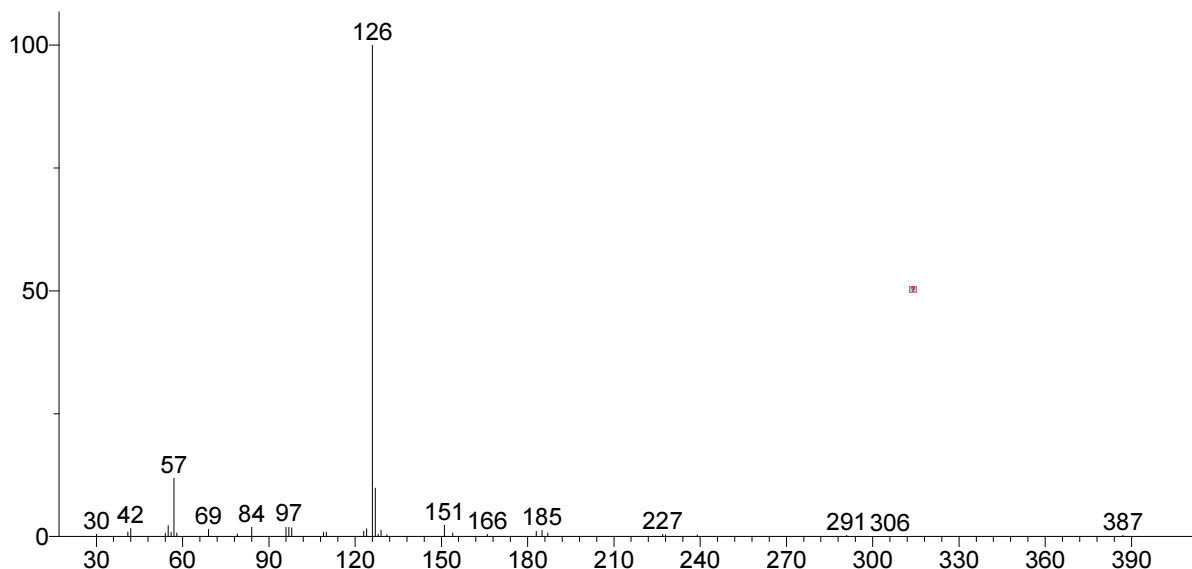


Unknown; InLib=-121



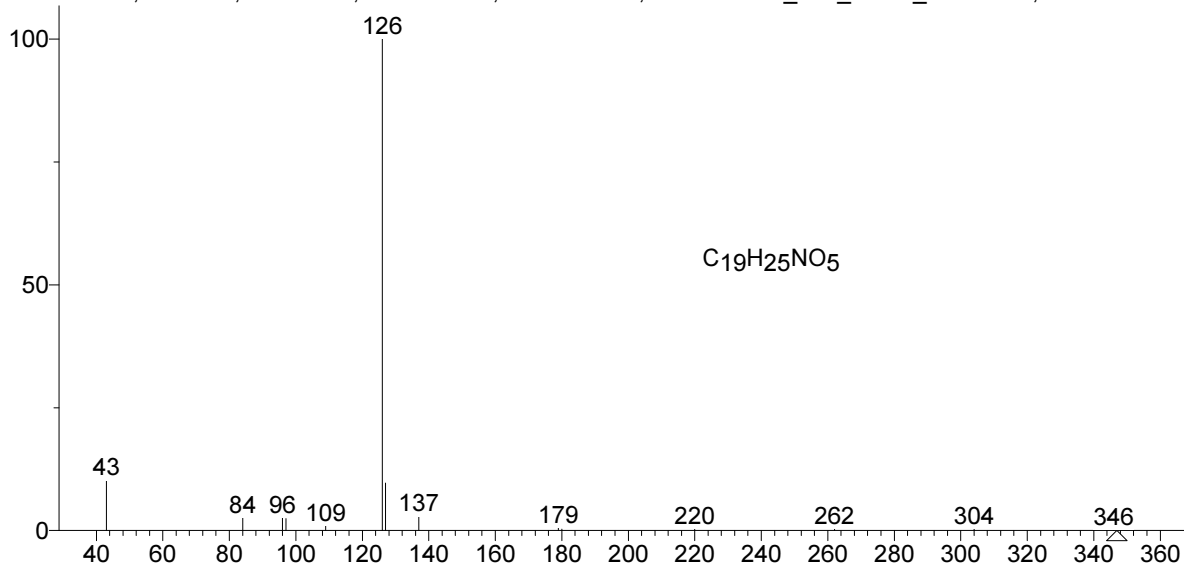
(Text File) Component at scan 868 (8.226 min) [Model = +126u] in C:\USERSMASTER\GOOGLE\DATA\SUDMED-20131121.D\DATA

Name: Component at scan 868 (8.226 min) [Model = +126u] in C:\USERSMASTER\GOOGLE\DATA\SUDMED-20131121.D\DATA.MS

MW: N/A ID#: 2 DB: Text File

Synonyms:
no synonyms.

Hit 1 : MDPV-M (3,4-dihydroxyphenyl-), diacetyl-
C₁₉H₂₅NO₅; MF: 829; RMF: 945; Prob 37.9%; CAS: 0-00-3; Lib: sudmed_767_nistlib_20131120; ID: 194.



(sudmed_767_nistlib_20131120) MDPV-M (3,4-dihydroxyphenyl-), diacetyl-

Name: MDPV-M (3,4-dihydroxyphenyl-), diacetyl-

Formula: C₁₉H₂₅NO₅

MW: 347 Exact Mass: 347.173273 CAS#: 0-00-3 ID#: 194 DB: sudmed_767_nistlib_20131120

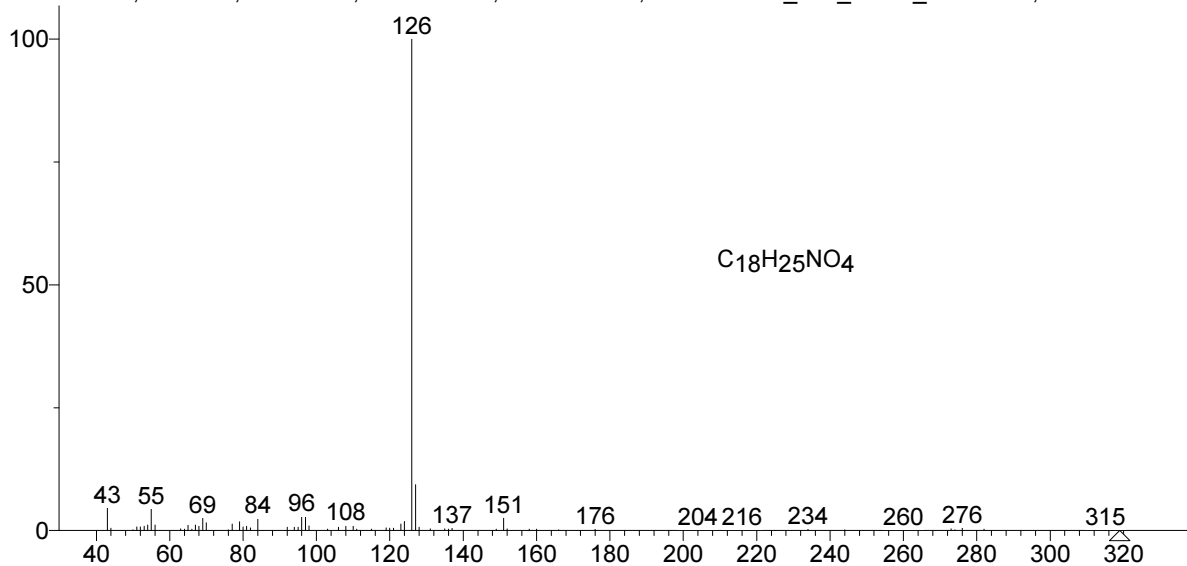
Other DBs: None

Comment: 12.5561 min 01199 |RI:2423|

Synonyms:

no synonyms.

Hit 2 : MDPV-M (4-HO-,3-MeO-), acetyl-
C₁₈H₂₅NO₄; MF: 810; RMF: 879; Prob 18.4%; CAS: 0-00-4; Lib: sudmed_767_nistlib_20131120; ID: 190.



(sudmed_767_nistlib_20131120) MDPV-M (4-HO-,3-MeO-), acetyl-

Name: MDPV-M (4-HO-,3-MeO-), acetyl-

Formula: C₁₈H₂₅NO₄

MW: 319 Exact Mass: 319.178358 CAS#: 0-00-4 ID#: 190 DB: sudmed_767_nistlib_20131120

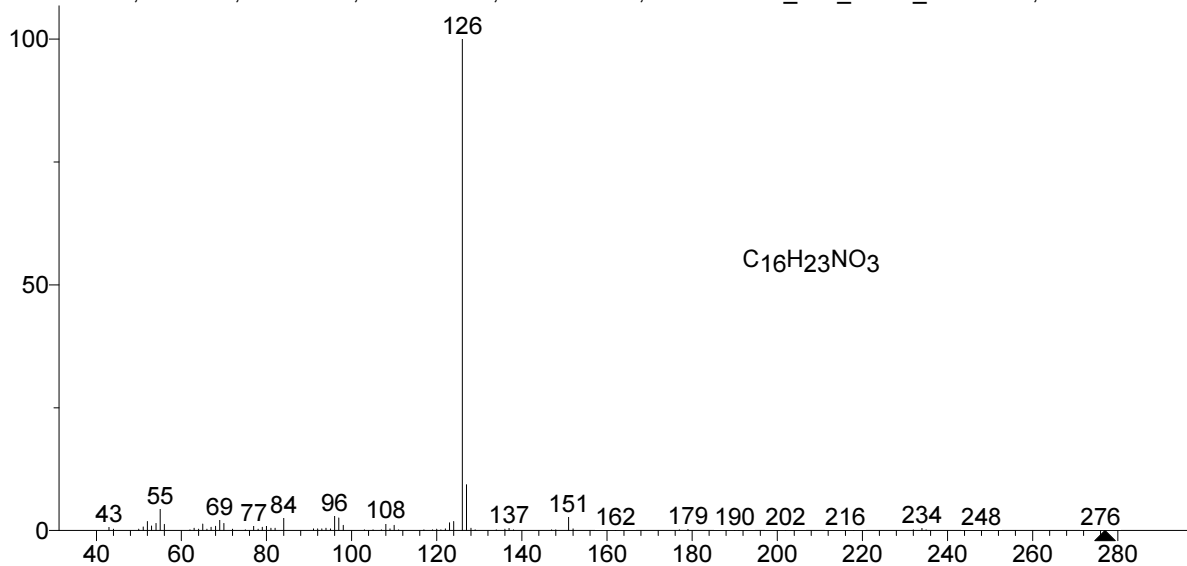
Other DBs: None

Comment: 12.1376 min 01199 |RI:2322|

Synonyms:

no synonyms.

Hit 3 : MDPV-M (4-HO-,3-MeO-)
C₁₆H₂₃NO₃; MF: 804; RMF: 865; Prob 18.4%; CAS: 0-00-4; Lib: sudmed_767_nistlib_20131120; ID: 191.



(sudmed_767_nistlib_20131120) MDPV-M (4-HO-,3-MeO-)

Name: MDPV-M (4-HO-,3-MeO-)

Formula: C₁₆H₂₃NO₃

MW: 277 Exact Mass: 277.167793 CAS#: 0-00-4 ID#: 191 DB: sudmed_767_nistlib_20131120

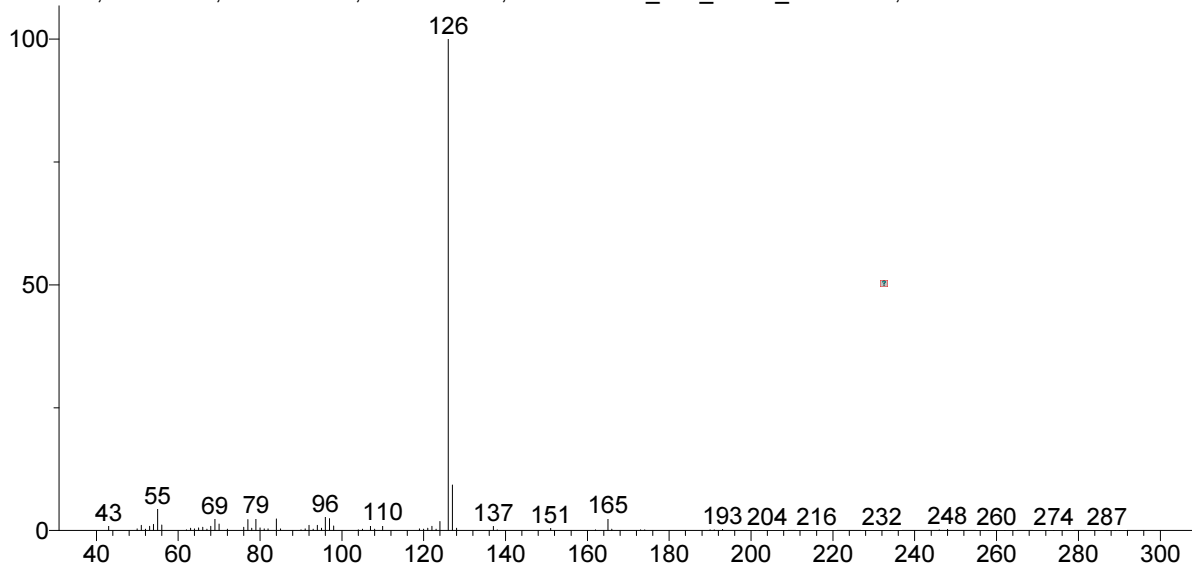
Other DBs: None

Comment: 11.6439 min 01209

Synonyms:

no synonyms.

Hit 4 : MDPV-M (3,4-dihydroxyphenyl-), dimethyl-
; MF: 787; RMF: 855; Prob 37.9%; CAS: 0-00-3; Lib: sudmed_767_nistlib_20131120; ID: 189.



(sudmed_767_nistlib_20131120) MDPV-M (3,4-dihydroxyphenyl-), dimethyl-

Name: MDPV-M (3,4-dihydroxyphenyl-), dimethyl-
MW: N/A CAS#: 0-00-3 ID#: 189 DB: sudmed_767_nistlib_20131120
Other DBs: None
Comment: 11.8503 min 01213
Synonyms:
no synonyms.